



RQ155 Crawler Excavator

Technological Breakthrough, Efficiency First

Operating Weight: 14000kg

Rated Power: 89kW/2200rpm

Bucket Capacity Range: 0.25-0.65m³

Power System

Equipped with Cummins F4.5 turbocharged China IV engine, with optimized power curve and sufficient torque reserve, delivering strong power output.

It adopts "DOC+DPF+EGR" exhaust treatment technology, no need for urea/AdBlue addition.

Hydraulic System

Adopts newly upgraded high-performance hydraulic components.

It is matched with Lonking exclusive customized negative flow control system, realizing efficient matching of engine, main pump and main valve, effectively improving the comprehensive operation performance of the whole machine.

It features faster response speed and more coordinated compound actions.

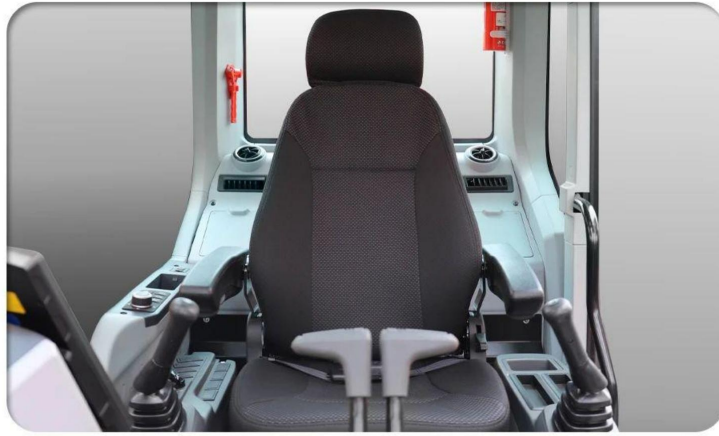


Cab

Frame-structured cab, which greatly improves strength and rigidity. It meets TOPS/ROPS safety standards for falling object protection and rollover protection.

Standard configurations include suspension seat, escape hammer, fire extinguisher, etc., which greatly enhance safety, comfort and reliability.

Optimized multi-function control panel for convenient operation.



Multi-Function Attachments

Reinforced working device, for diverse construction working conditions, it can be adapted to multi-functional attachments such as breakers and clamshell buckets, expanding the functions of the excavator to continuously create more value and high returns for you.

The bucket adopts high-strength wear-resistant plate with reinforced structure. Optimized bucket shape and cutting angle reduce digging resistance, maximizing digging and loading efficiency, which is energy-saving and efficient.



Maintenance

Optimized filter installation position makes daily maintenance more convenient, saving time and effort.

Applicable Scenarios

Mainly applicable to road construction, municipal construction, farmland water conservancy, earthwork projects and other various engineering operations.



Detailed Parameters

Item	Unit	Value
Operating Weight	kg	14000
Bucket Capacity	m ³	0.25-0.65
Engine Model	-	Cummins F4.5
Engine Power	kw/rpm	89/2200
Fuel Tank Capacity	L	290
Main Pump Maximum Flow	L/min	2X120
Working Pressure	Mpa	34.5
Hydraulic Oil Tank Capacity	L	140
Maximum Digging Radius	mm	8336
Maximum Digging Height	mm	8343
Maximum Digging Depth	mm	5542
Ground Maximum Digging Radius	mm	8214
Travel Speed (High/Low)	km/h	5.5/3.3
Swing Speed	n/min	11.9

Tail Swing Radius	mm	2560
Track Gauge	mm	1990
Bucket Maximum Digging Force	kN	99

Product Manager: Frida:+86 19355385977 Amy:+86 18297527921