



# RQ225 Crawler Excavator

## Technological Breakthrough, Efficiency First

**Operating Weight:** 21800kg

**Bucket Capacity Range:** 0.8-1.1m<sup>3</sup>

### Power System

Equipped with Cummins B6.7 turbocharged China IV engine, with optimized power curve and sufficient torque reserve, delivering strong power output.

It adopts "DOC+DPF+SCR" exhaust treatment technology, which is energy-saving and eco-friendly.



### Hydraulic System

Adopts Lonking self-developed positive flow control system, with targeted optimization.

It features faster response speed and more precise power matching, truly achieving "what you get is what you need".



### Cab

Frame-structured cab with optimized sealing design. It meets TOPS/ROPS safety standards for falling object protection and rollover protection.

Standard configurations include suspension seat, escape hammer, fire extinguisher, etc., which greatly enhance safety, comfort and reliability.

Optimized multi-function control panel for convenient operation.

## Multi-Function Attachments

Reinforced working device, for diverse construction working conditions, it can be adapted to multi-functional attachments such as breakers and clamshell buckets, expanding the functions of the excavator to continuously create more value and high returns for you.

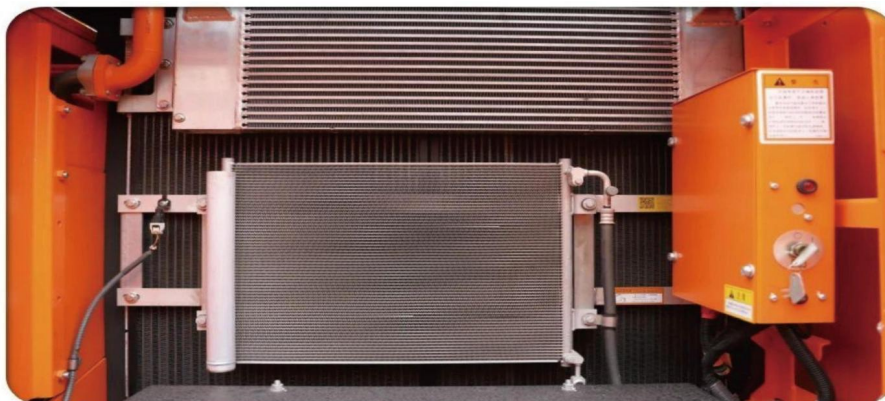
The bucket adopts high-strength wear-resistant plate with reinforced structure. Optimized bucket shape and cutting angle reduce digging resistance, maximizing digging and loading efficiency, which is energy-saving and efficient.



## Cooling System

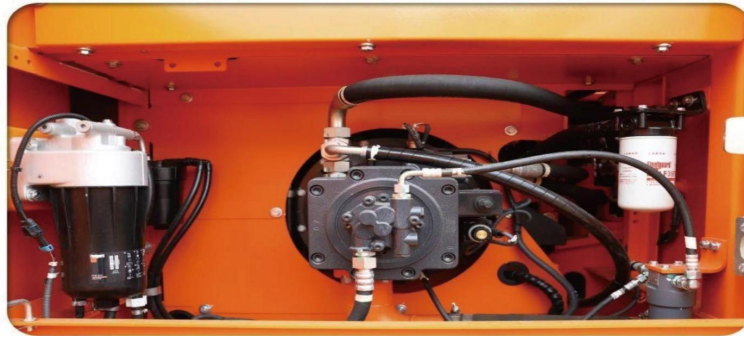
Adopts new cooling system, increasing heat dissipation area and air intake volume, significantly improving heat dissipation capacity, extending the service life of engine and hydraulic system.

Meanwhile, it optimizes the performance, greatly reducing the vibration and noise of the whole machine.



## Maintenance

Optimized filter installation position makes daily maintenance more convenient, saving time and effort.



## Applicable Scenarios

Mainly applicable to construction, earthwork projects, farmland water conservancy, road and bridge construction, urban construction and other various engineering operations.



## Detailed Parameters

Item	Unit	Value
Operating Weight	kg	21800
Bucket Capacity	m <sup>3</sup>	0.8-1.1
Engine Model	-	Cummins B6.7
Engine Power	kw/rpm	126/2000
Fuel Tank Capacity	L	400
Main Pump Maximum Flow	L/min	2X221
Working Pressure	Mpa	35
Hydraulic Oil Tank Capacity	L	165/256
Maximum Digging Radius	mm	9896
Maximum Digging Height	mm	9475
Maximum Digging Depth	mm	6644
Maximum Dumping Height	mm	6717
Ground Maximum Digging Radius	mm	9733
Travel Speed (High/Low)	km/h	4.9/3.2
Swing Speed	n/min	10.3
Tail Swing Radius	mm	3080
Track Wheel Base	mm	3462
Track Gauge	mm	2380
Bucket Maximum Digging Force	kN	139
Arm Maximum Digging Force	kN	101
Transport Dimension (LxWxH)	mm	9765x2980x3080

Product Manager: Frida:+86 19355385977 Amy:+86 18297527921