



## RQ75 Crawler Excavator

Technological Breakthrough, Efficiency First

**Operating Weight:** 7680kg

**Rated Power:** 46.2kW/2200rpm

**Bucket Capacity Range:** 0.28-0.32m<sup>3</sup>



### Power System

Equipped with high-performance, low-noise China IV compliant Yanmar 4TNV98C engine, delivering a rated power of 46.2kW with strong power output.

It adopts "DOC+DPF+EGR" exhaust treatment technology, no need for urea addition.



## Hydraulic System

Adopts load-sensing system with automatic sensing control, featuring fast response, higher operation efficiency and better control performance.

It is matched with high-performance large-displacement main pump and large-diameter main valve, with optimized spool structure.

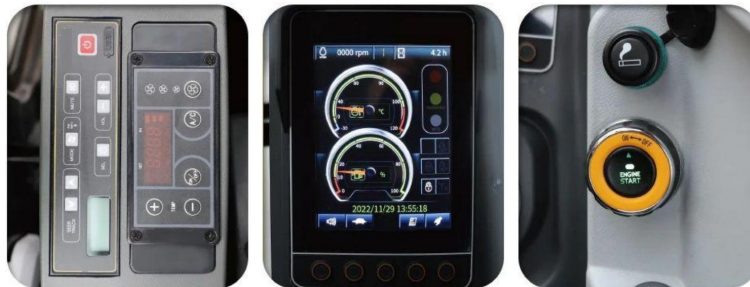
It features low hydraulic loss, smooth operation with small impact, and superior leveling performance, greatly improving operation efficiency.

## Cab

Frame-structured cab, which greatly improves strength and rigidity. Column guard design ensures reliable safety.

Standard configurations include suspension seat, escape hammer, fire extinguisher, etc., which greatly enhance safety, comfort and reliability.

Optimized multi-function control panel for convenient operation.



## Multi-Function Attachments

For diverse construction working conditions, it can be adapted to multi-functional attachments such as breakers and narrow buckets, expanding the functions of the excavator to continuously create more value and high returns for you.

The bucket adopts high-strength wear-resistant plate with reinforced structure. Optimized bucket shape reduces digging resistance, making it more wear-resistant and labor-saving, effectively improving operation efficiency.

## Maintenance

The rear hood of the whole machine adopts three-door opening design, providing larger operation space for easier maintenance.

## Applicable Scenarios

Mainly applicable to urban renovation, municipal construction, housing construction, farmland water conservancy and other small earthwork projects.



## Detailed Parameters

Item	Unit	Value
Operating Weight	kg	7680
Bucket Capacity	m <sup>3</sup>	0.28-0.32
Engine Model	-	Yanmar 4TNV98C
Engine Power	kw/rpm	46.2/2200
Maximum Digging Radius	mm	6290
Maximum Digging Depth	mm	4070
Travel Speed (High/Low)	km/h	4.8/2.8
Swing Speed	n/min	11.5
Track Gauge	mm	1750

Product Manager: Frida:+86 19355385977 Amy:+86 18297527921